

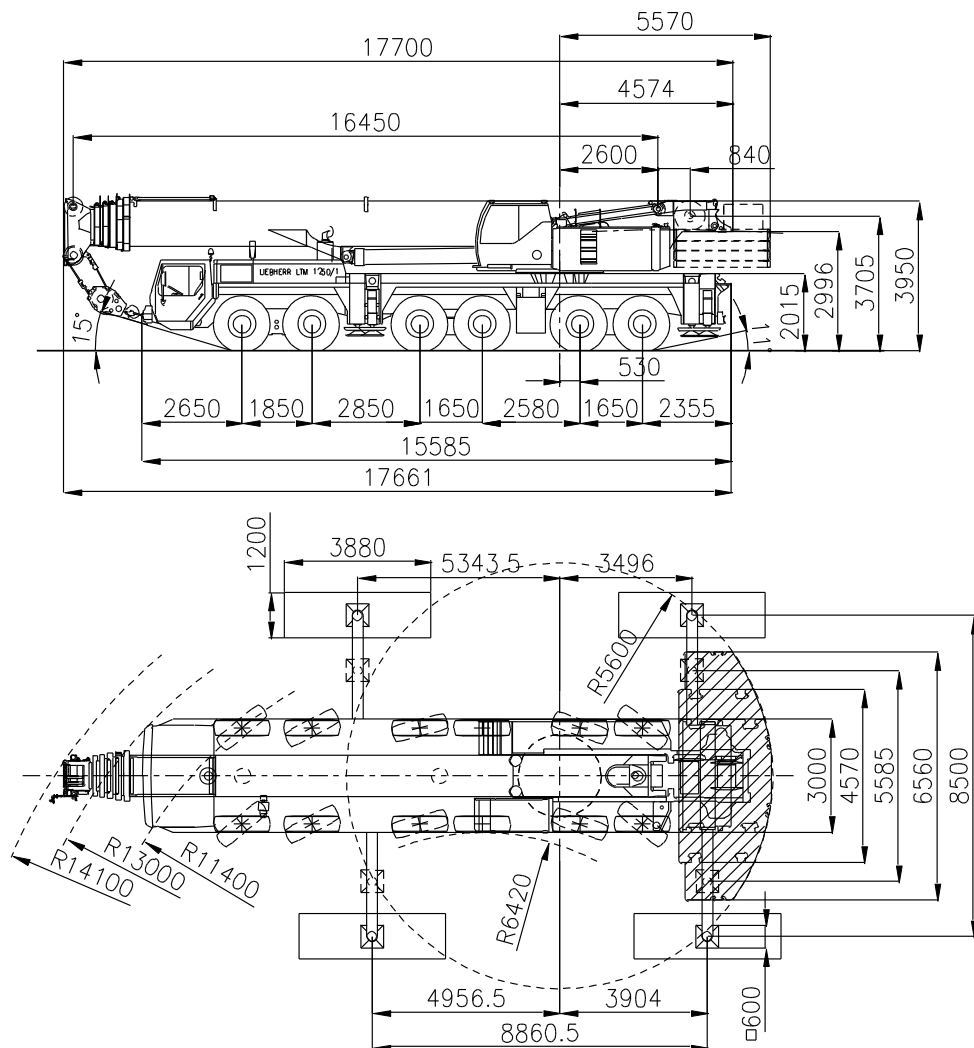


sarens
group

www.sarens.com

LIEBHERR LTM 1250/1

250 TON



Axle load / Charge par essieu / Achslast / Aslast	: 6 x 12 t	(0 t)
Total weight / Poids total / Gesamtgewicht / Totaal gewicht	: 72 t	(0 t)
Tyres / Pneus / Bereifung / Banden	: 14.00 R 25	

nothing too heavy, nothing too high





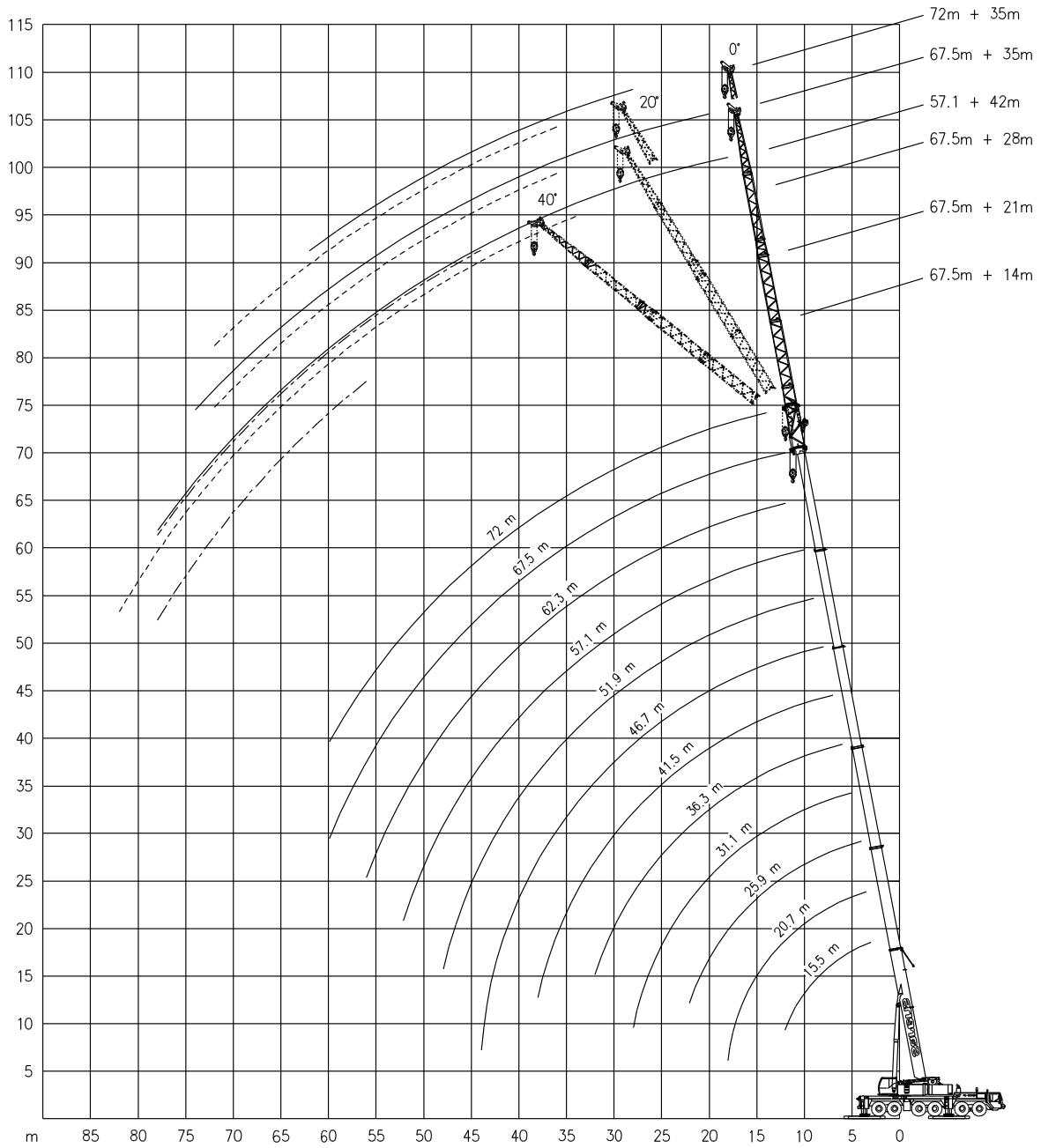
LIEBHERR LTM 1250/1

Working ranges
Portées

250 TON

Arbeitsbereiche
Werkbereich

T + TF



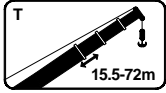


LIEBHERR LTM 1250/1

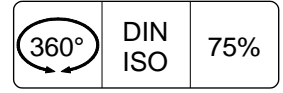
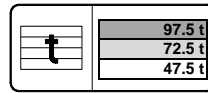
250 TON

Lifting capacities
Capacités

Tragfähigkeiten
Capaciteiten



T



	15.5 m	20.7 m	25.9 m	31.1 m	36.3 m	41.5 m	46.7 m	51.9 m	57.1 m	62.3 m	67.5 m	72.0 m
m	t	t	t	t	t	t	t	t	t	t	t	t
3.0	176.0	-	-	-	-	-	-	-	-	-	-	-
3.5	173.0	135.0	-	-	-	-	-	-	-	-	-	-
4.0	157.0	135.0	117.0	-	-	-	-	-	-	-	-	-
4.5	144.0	134.0	117.0	-	-	-	-	-	-	-	-	-
5.0	136.0	127.0	116.0	86.0	-	-	-	-	-	-	-	-
6.0	123.0	115.0	109.0	86.0	71.0	-	-	-	-	-	-	-
7.0	112.0	105.0	100.0	84.0	70.0	55.0	-	-	-	-	-	-
8.0	101.0	96.0	92.0	82.0	69.0	55.0	43.0	-	-	-	-	-
9.0	91.0	89.0	85.0	79.0	68.0	54.0	42.5	33.5	-	-	-	-
10.0	83.0	83.0	79.0	74.0	65.0	54.0	40.5	33.5	26.2	-	-	-
12.0	63.0	69.0	69.0	65.0	58.0	51.0	37.0	31.5	26.2	20.7	17.0	-
14.0	-	58.0	58.0	57.0	52.0	46.0	33.5	29.2	24.8	20.6	16.9	14.0
16.0	-	49.5	49.5	49.0	46.5	42.0	29.9	26.6	23.3	19.9	16.8	14.0
18.0	-	25.8	43.0	42.5	42.5	38.5	27.2	24.3	21.6	18.9	16.2	13.9
20.0	-	-	37.5	37.0	38.0	35.5	25.2	22.1	19.9	17.7	15.6	13.5
22.0	-	-	32.5	32.5	33.5	32.5	23.7	20.0	18.4	16.5	14.8	13.1
24.0	-	-	-	28.9	29.8	30.0	22.4	18.4	17.0	15.4	14.0	12.4
26.0	-	-	-	25.8	26.6	27.6	21.1	17.2	15.6	14.4	13.2	11.7
28.0	-	-	-	21.1	24.0	24.9	20.0	16.0	14.4	13.4	12.4	11.0
30.0	-	-	-	-	21.7	22.6	18.9	15.0	13.3	12.5	11.7	10.4
32.0	-	-	-	-	19.7	20.6	18.1	14.0	12.5	11.7	11.0	9.8
34.0	-	-	-	-	-	18.8	17.4	13.1	11.7	10.9	10.3	9.2
36.0	-	-	-	-	-	17.3	16.8	12.6	11.0	10.2	9.7	8.7
38.0	-	-	-	-	-	14.0	16.2	12.0	10.3	9.6	9.1	8.1
40.0	-	-	-	-	-	-	15.4	11.6	9.8	9.0	8.5	7.7
44.0	-	-	-	-	-	-	6.3	10.6	8.8	8.1	7.4	6.7
48.0	-	-	-	-	-	-	-	9.8	7.9	7.4	6.4	5.9
52.0	-	-	-	-	-	-	-	-	7.4	6.7	5.7	5.2
56.0	-	-	-	-	-	-	-	-	-	6.1	5.0	4.6
60.0	-	-	-	-	-	-	-	-	-	-	4.3	4.0

	15.5 m	20.7 m	25.9 m	31.1 m	36.3 m	41.5 m	46.7 m	51.9 m	57.1 m	62.3 m	67.5 m	72.0 m
m	t	t	t	t	t	t	t	t	t	t	t	t
3.0	176.0	-	-	-	-	-	-	-	-	-	-	-
3.5	173.0	135.0	-	-	-	-	-	-	-	-	-	-
4.0	157.0	135.0	117.0	-	-	-	-	-	-	-	-	-
4.5	144.0	134.0	117.0	-	-	-	-	-	-	-	-	-
5.0	136.0	127.0	116.0	86.0	-	-	-	-	-	-	-	-
6.0	123.0	115.0	109.0	86.0	71.0	-	-	-	-	-	-	-
7.0	109.0	105.0	100.0	84.0	70.0	55.0	-	-	-	-	-	-
8.0	97.0	96.0	92.0	82.0	69.0	55.0	43.0	-	-	-	-	-
9.0	86.0	86.0	85.0	79.0	68.0	54.0	42.5	33.5	-	-	-	-
10.0	77.0	77.0	77.0	74.0	65.0	54.0	40.5	33.5	26.2	-	-	-
12.0	63.0	63.0	63.0	62.0	58.0	51.0	37.0	31.5	26.2	20.7	17.0	-
14.0	-	52.0	52.0	51.0	52.0	46.0	33.5	29.2	24.8	20.6	16.9	14.0
16.0	-	45.0	44.0	43.5	44.5	42.0	29.9	26.6	23.3	19.9	16.8	14.0
18.0	-	25.8	37.5	37.0	38.5	38.5	27.2	24.3	21.6	18.9	16.2	13.9
20.0	-	-	32.5	32.0	35.0	34.0	25.2	22.1	19.9	17.7	15.6	13.5
22.0	-	-	28.5	29.4	30.5	29.5	23.7	20.0	18.4	16.5	14.8	13.1
24.0	-	-	-	27.1	26.6	25.7	22.4	18.4	17.0	15.4	14.0	12.4
26.0	-	-	-	24.0	23.5	22.7	21.1	17.2	15.6	14.4	13.2	11.7
28.0	-	-	-	21.1	21.0	20.1	20.0	16.0	14.4	13.4	12.4	11.0
30.0	-	-	-	-	18.8	17.9	18.8	15.0	13.3	12.5	11.7	10.4
32.0	-	-	-	-	17.0	17.1	16.9	14.0	12.5	11.7	11.0	9.8
34.0	-	-	-	-	-	16.0	15.3	13.1	11.7	10.9	10.3	9.2
36.0	-	-	-	-	-	14.6	13.9	12.6	11.0	10.2	9.7	8.7
38.0	-	-	-	-	-	13.4	12.6	12.0	10.3	9.6	9.1	8.1
40.0	-	-	-	-	-	-	11.5	11.6	9.8	9.0	8.5	7.7
44.0	-	-	-	-	-	-	6.3	9.9	8.8	8.1	7.4	6.7
48.0	-	-	-	-	-	-	-	8.3	7.9	7.4	6.4	5.9
52.0	-	-	-	-	-	-	-	-	6.9	6.6	5.7	5.2
56.0	-	-	-	-	-	-	-	-	-	5.5	4.8	4.6
60.0	-	-	-	-	-	-	-	-	-	-	3.8	3.8

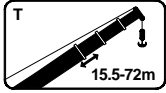


LIEBHERR LTM 1250/1

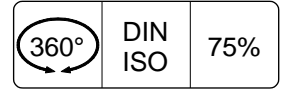
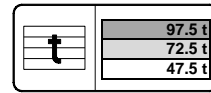
250 TON


Lifting capacities
Capacités

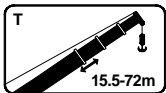
Tragfähigkeiten
Capacités



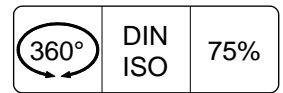
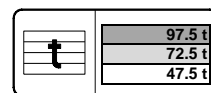
T




	15.5 m	20.7 m	25.9 m	31.1 m	36.3 m	41.5 m	46.7 m	51.9 m	57.1 m	62.3 m	67.5 m	72.0 m
m	t	t	t	t	t	t	t	t	t	t	t	t
3.0	176.0	-	-	-	-	-	-	-	-	-	-	-
3.5	173.0	135.0	-	-	-	-	-	-	-	-	-	-
4.0	157.0	135.0	117.0	-	-	-	-	-	-	-	-	-
4.5	144.0	134.0	117.0	-	-	-	-	-	-	-	-	-
5.0	136.0	127.0	116.0	86.0	-	-	-	-	-	-	-	-
6.0	118.0	115.0	109.0	86.0	71.0	-	-	-	-	-	-	-
7.0	102.0	102.0	100.0	84.0	70.0	55.0	-	-	-	-	-	-
8.0	88.0	89.0	88.0	82.0	69.0	55.0	43.0	-	-	-	-	-
9.0	77.0	78.0	77.0	74.0	68.0	54.0	42.5	33.5	-	-	-	-
10.0	68.0	68.0	68.0	64.0	62.0	54.0	40.5	33.5	26.2	-	-	-
12.0	54.0	56.0	54.0	50.0	51.0	48.5	37.0	31.5	26.2	20.7	17.0	-
14.0	-	43.5	42.5	42.5	42.5	39.5	33.5	29.2	24.8	20.6	16.9	14.0
16.0	-	35.5	37.0	37.0	35.5	33.0	29.9	26.6	23.3	19.9	16.8	14.0
18.0	-	25.8	30.5	30.5	30.0	28.0	27.1	24.3	21.6	18.9	16.2	13.9
20.0	-	-	25.5	25.6	25.2	24.1	24.4	21.6	19.9	17.7	15.6	13.5
22.0	-	-	21.8	21.9	21.5	22.4	21.3	19.5	18.1	16.5	14.8	13.1
24.0	-	-	-	19.0	18.5	19.4	18.6	17.4	16.4	15.4	14.0	12.4
26.0	-	-	-	16.6	16.2	16.9	16.2	16.5	15.1	14.0	13.2	11.7
28.0	-	-	-	15.2	14.3	14.9	14.7	14.6	13.3	12.9	12.4	11.0
30.0	-	-	-	-	12.7	13.2	13.6	12.9	12.5	12.2	11.1	10.4
32.0	-	-	-	-	11.2	12.0	12.1	11.5	11.5	11.0	9.8	9.6
34.0	-	-	-	-	-	11.3	10.9	10.4	10.2	9.8	8.7	8.5
36.0	-	-	-	-	-	10.3	9.7	9.7	9.2	8.8	7.7	7.5
38.0	-	-	-	-	-	9.3	8.7	8.7	8.1	7.8	6.8	6.6
40.0	-	-	-	-	-	-	7.9	7.8	7.2	6.8	6.0	5.8
44.0	-	-	-	-	-	-	6.3	6.3	5.7	5.3	4.6	4.5
48.0	-	-	-	-	-	-	-	5.0	4.4	4.0	3.3	3.3
52.0	-	-	-	-	-	-	-	-	3.4	3.0	2.3	2.3
56.0	-	-	-	-	-	-	-	-	-	2.1	1.4	1.4



T



	15.5 m	20.7 m	25.9 m	31.1 m	36.3 m	41.5 m	46.7 m	51.9 m	57.1 m	62.3 m	67.5 m	72.0 m
m	t	t	t	t	t	t	t	t	t	t	t	t
8.0	-	79.0	77.0	67.0	59.0	51.0	-	-	-	-	-	-
9.0	73.0	74.0	69.0	64.0	62.0	49.0	42.5	33.5	-	-	-	-
10.0	64.0	65.0	60.0	56.0	55.0	53.0	40.5	33.5	26.2	-	-	-
11.0	55.0	56.0	54.0	52.0	52.0	48.0	38.5	32.5	26.2	20.7	-	-
12.0	47.5	49.5	48.0	48.5	46.5	43.5	37.0	31.5	26.2	20.7	17.0	-
14.0	-	39.5	41.0	41.0	39.0	36.0	33.5	29.2	24.8	20.6	16.9	-
16.0	-	32.5	33.5	33.5	33.0	30.5	29.2	26.2	23.3	19.9	16.8	-
18.0	-	25.8	28.1	28.2	27.8	26.2	26.5	23.5	21.6	18.9	16.2	-
20.0	-	-	24.0	24.1	23.6	24.1	23.1	21.3	19.9	17.7	15.6	-
22.0	-	-	20.7	20.8	20.4	21.2	18.9	18.6	17.6	16.5	14.8	-
24.0	-	-	-	18.2	17.7	18.5	17.8	17.4	16.4	15.3	14.0	-
26.0	-	-	-	16.2	15.7	16.3	15.6	16.0	14.6	13.7	13.2	-
28.0	-	-	-	15.1	13.9	14.5	14.7	14.2	13.3	12.9	12.2	-
30.0	-	-	-	-	12.4	12.9	13.2	12.6	12.5	12.0	10.8	-
32.0	-	-	-	-	11.0	12.0	11.9	11.2	11.2	10.7	9.6	-
34.0	-	-	-	-	-	11.2	10.7	10.4	10.2	9.6	8.6	-
36.0	-	-	-	-	-	10.1	9.6	9.6	9.0	8.7	7.6	-
38.0	-	-	-	-	-	9.2	8.6	8.6	8.1	7.7	6.8	-
40.0	-	-	-	-	-	-	7.9	7.8	7.2	6.8	6.0	-
44.0	-	-	-	-	-	-	6.3	6.3	5.7	5.3	4.6	-
48.0	-	-	-	-	-	-	-	5.1	4.5	4.1	3.4	-
52.0	-	-	-	-	-	-	-	-	3.5	3.1	2.4	-
56.0	-	-	-	-	-	-	-	-	-	2.3	1.5	-

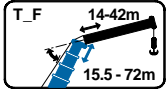


LIEBHERR LTM 1250/1

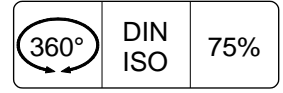
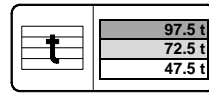
250 TON

Lifting capacities
Capacités

Tragfähigkeiten
Capacités



TF



m		15.5 m														
		14 m			21 m			28 m			35 m			42 m		
		0°	20°	40°	0°	20°	40°	0°	20°	40°	0°	20°	40°	0°	20°	40°
3.0	t	17.9	-	-	-	-	-	-	-	-	-	-	-	-	-	-
3.5	t	17.9	-	-	-	-	-	-	-	-	-	-	-	-	-	-
4.0	t	17.9	-	-	13.6	-	-	-	-	-	-	-	-	-	-	-
4.5	t	17.9	-	-	13.6	-	-	-	-	-	-	-	-	-	-	-
5.0	t	17.7	-	-	13.4	-	-	-	-	-	-	-	-	-	-	-
6.0	t	17.3	-	-	13.2	-	-	-	-	-	-	-	-	-	-	-
7.0	t	16.8	-	-	12.8	-	-	9.7	-	-	-	-	-	-	-	-
8.0	t	16.1	16.1	-	12.3	-	-	9.4	-	-	-	-	-	-	-	-
9.0	t	15.2	15.3	-	11.8	-	-	9.0	-	-	-	-	-	-	-	-
10.0	t	14.2	14.5	-	11.4	-	-	8.6	-	-	-	-	-	-	-	-
12.0	t	12.3	13.1	12.5	10.7	9.6	-	8.0	-	-	6.2	-	-	4.7	-	-
14.0	t	10.6	12.0	11.7	9.9	9.0	-	7.4	-	-	5.7	-	-	4.4	-	-
16.0	t	9.0	11.0	10.8	9.2	8.5	-	6.9	6.2	-	5.3	-	-	4.1	-	-
18.0	t	7.7	9.4	10.1	8.3	8.0	7.3	6.4	5.8	-	4.9	-	-	3.8	-	-
20.0	t	6.5	7.9	9.2	7.4	7.6	7.0	6.0	5.4	-	4.6	4.1	-	3.5	-	-
22.0	t	5.5	6.5	7.6	6.4	7.3	6.8	5.7	5.1	4.5	4.3	3.8	-	3.3	2.9	-
24.0	t	4.6	5.4	6.0	5.5	6.9	6.6	5.3	4.8	4.3	4.0	3.5	-	3.0	2.7	-
26.0	t	3.9	4.3	5.4	4.7	6.2	6.4	5.0	4.6	4.1	3.7	3.3	-	2.8	2.5	-
28.0	t	3.1	3.4	-	4.1	5.3	6.2	4.6	4.4	3.9	3.5	3.1	2.7	2.6	2.3	-
30.0	t	-	-	-	3.6	4.4	5.2	4.2	4.2	3.8	3.3	2.9	2.5	2.4	2.2	-
32.0	t	-	-	-	3.0	3.6	4.0	3.6	4.0	3.7	3.1	2.7	2.4	2.3	2.0	-
34.0	t	-	-	-	2.5	2.8	-	3.2	3.9	3.6	2.8	2.6	2.3	2.2	1.9	1.7
36.0	t	-	-	-	-	-	-	2.8	3.6	3.6	2.6	2.5	2.2	2.1	1.8	1.6
38.0	t	-	-	-	-	-	-	2.4	3.0	3.5	2.5	2.4	2.2	1.9	1.7	1.5
40.0	t	-	-	-	-	-	-	2.0	2.4	3.5	2.3	2.3	2.1	1.8	1.6	1.4
44.0	t	-	-	-	-	-	-	-	-	-	1.7	2.2	2.1	1.6	1.5	1.3
48.0	t	-	-	-	-	-	-	-	-	-	1.1	1.5	-	1.4	1.4	1.3
52.0	t	-	-	-	-	-	-	-	-	-	-	-	-	1.0	1.3	1.3
54.0	t	-	-	-	-	-	-	-	-	-	-	-	-	1.0	1.0	1.3
56.0	t	-	-	-	-	-	-	-	-	-	-	-	-	1.0	-	-

m		51.9 m														
		14 m			21 m			28 m			35 m			42 m		
		0°	20°	40°	0°	20°	40°	0°	20°	40°	0°	20°	40°	0°	20°	40°
10.0	t	17.9	-	-	-	-	-	-	-	-	-	-	-	-	-	-
12.0	t	17.9	-	-	13.4	-	-	-	-	-	-	-	-	-	-	-
14.0	t	17.5	-	-	13.1	-	-	9.7	-	-	-	-	-	-	-	-
16.0	t	17.1	15.4	-	12.6	-	-	9.3	-	-	6.9	-	-	5.2	-	-
18.0	t	16.6	14.7	-	12.1	-	-	8.9	-	-	6.7	-	-	5.0	-	-
20.0	t	15.9	14.0	12.2	11.7	9.4	-	8.5	-	-	6.4	-	-	4.8	-	-
22.0	t	15.1	13.4	11.9	11.3	9.1	-	8.2	-	-	6.1	-	-	4.6	-	-
24.0	t	14.1	12.9	11.5	10.9	8.8	-	7.8	6.0	-	5.9	-	-	4.4	-	-
26.0	t	13.3	12.4	11.2	10.5	8.6	7.2	7.5	5.8	-	5.6	-	-	4.2	-	-
28.0	t	12.4	11.9	10.8	10.1	8.3	7.1	7.2	5.6	-	5.4	4.0	-	4.0	-	-
30.0	t	11.6	11.5	10.5	9.8	8.1	7.0	7.0	5.5	4.4	5.1	3.9	-	3.8	-	-
32.0	t	10.8	11.1	10.3	9.4	7.9	6.9	6.7	5.3	4.3	4.9	3.7	-	3.6	2.6	-
34.0	t	10.1	10.3	10.0	9.0	7.7	6.8	6.4	5.1	4.2	4.7	3.6	-	3.5	2.5	-
36.0	t	9.4	9.7	9.8	8.5	7.6	6.7	6.2	5.0	4.1	4.5	3.4	2.6	3.3	2.4	-
38.0	t	8.7	9.0	9.3	8.1	7.4	6.6	6.0	4.9	4.0	4.3	3.3	2.5	3.2	2.3	-
40.0	t	7.9	8.4	8.6	7.6	7.2	6.5	5.8	4.7	3.9	4.2	3.2	2.5	3.0	2.2	-
44.0	t	6.9	7.2	7.5	6.6	6.9	6.4	5.4	4.5	3.8	3.8	3.0	2.4	2.7	2.1	-
48.0	t	5.9	6.2	-	5.7	6.2	6.2	5.1	4.3	3.7	3.6	2.8	2.3	2.5	1.9	-
52.0	t	5.1	5.3	-	4.9	5.3	5.6	4.7	4.1	3.6	3.3	2.6	2.2	2.4	1.8	-
56.0	t	4.4	4.5	-	4.2	4.6	-	4.2	3.9	3.6	3.1	2.5	2.2	2.2	1.7	1.4
60.0	t	3.7	-	-	3.7	3.9	-	3.6	3.8	3.6	2.8	2.4	2.1	2.1	1.6	1.3
64.0	t	-	-	-	3.1	3.2	-	3.1	3.4	-	2.6	2.3	2.1	1.9	1.5	1.3
68.0	t	-	-	-	2.6	-	-	2.7	2.8	-	2.5	2.3	2.1	1.7	1.4	1.3
72.0	t	-	-	-	-	-	-	2.3	2.3	-	2.1	2.2	-	1.6	1.4	1.3
76.0	t	-	-	-	-	-	-	1.9	-	-	1.8	2.0	-	1.5	1.4	-
80.0	t	-	-	-	-	-	-	-	-	-	1.4	-	-	1.3	1.4	-
84.0	t	-	-	-	-	-	-	-	-	-	-	-	-	1.0	1.2	-
86.0	t	-	-	-	-	-	-	-	-	-	-	-	-	-	1.0	-

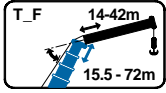


LIEBHERR LTM 1250/1

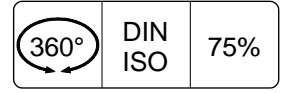
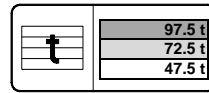
250 TON

Lifting capacities
Capacités

Tragfähigkeiten
Capacités



TF



m		57.1 m														
		14 m			21 m			28 m			35 m			42 m		
		0°	20°	40°	0°	20°	40°	0°	20°	40°	0°	20°	40°	0°	20°	40°
12.0	t	14.5	-	-	-	-	-	-	-	-	-	-	-	-	-	-
14.0	t	14.4	-	-	10.8	-	-	8.5	-	-	-	-	-	-	-	-
16.0	t	14.3	-	-	10.8	-	-	8.4	-	-	6.3	-	-	-	-	-
18.0	t	13.9	13.7	-	10.5	-	-	8.0	-	-	6.1	-	-	4.5	-	-
20.0	t	13.4	13.1	-	10.3	-	-	7.7	-	-	5.9	-	-	4.3	-	-
22.0	t	12.9	12.7	11.5	10.2	8.6	-	7.5	-	-	5.6	-	-	4.2	-	-
24.0	t	12.2	12.1	11.2	10.0	8.4	-	7.2	-	-	5.4	-	-	4.0	-	-
26.0	t	11.5	11.6	10.9	9.8	8.2	-	7.0	5.6	-	5.2	-	-	3.9	-	-
28.0	t	10.8	11.0	10.6	9.4	8.0	6.9	6.8	5.4	-	5.0	-	-	3.7	-	-
30.0	t	10.1	10.5	10.3	8.9	7.8	6.8	6.5	5.3	-	4.8	3.7	-	3.6	-	-
32.0	t	9.5	9.9	9.9	8.4	7.6	6.7	6.3	5.1	4.2	4.6	3.6	-	3.4	-	-
34.0	t	8.9	9.3	9.4	8.0	7.5	6.7	6.1	5.0	4.1	4.4	3.4	-	3.3	2.4	-
36.0	t	8.4	8.7	9.0	7.5	7.4	6.6	5.9	4.8	4.0	4.3	3.3	-	3.1	2.3	-
38.0	t	7.8	8.1	8.4	7.1	7.2	6.5	5.7	4.7	3.9	4.1	3.2	2.5	3.0	2.3	-
40.0	t	7.3	7.6	7.8	6.7	7.0	6.5	5.6	4.6	3.9	4.0	3.1	2.4	2.9	2.2	-
44.0	t	6.3	6.6	6.8	5.9	6.3	6.4	5.3	4.4	3.8	3.7	2.9	2.3	2.7	2.0	-
48.0	t	5.4	5.6	5.9	5.2	5.5	5.8	4.8	4.2	3.7	3.4	2.8	2.3	2.4	1.9	-
52.0	t	4.7	4.8	-	4.4	4.8	5.1	4.2	4.1	3.6	3.3	2.6	2.2	2.3	1.8	-
56.0	t	4.1	4.2	-	3.8	4.1	4.3	3.6	4.0	3.6	3.1	2.5	2.2	2.1	1.7	1.4
60.0	t	3.5	3.6	-	3.4	3.5	-	3.1	3.5	3.6	2.9	2.4	2.1	2.0	1.6	1.3
64.0	t	3.0	-	-	2.9	3.0	-	2.6	2.9	3.2	2.4	2.3	2.1	1.9	1.5	1.3
68.0	t	-	-	-	-	2.5	-	2.4	2.5	-	2.0	2.2	2.1	1.8	1.5	1.3
72.0	t	-	-	-	-	-	-	2.0	2.2	-	1.8	2.0	-	1.5	1.4	1.3
76.0	t	-	-	-	-	-	-	1.7	1.8	-	1.5	1.7	-	1.1	1.4	1.3
80.0	t	-	-	-	-	-	-	1.3	-	-	1.2	1.4	-	-	1.2	-
84.0	t	-	-	-	-	-	-	-	-	-	-	1.0	-	-	-	-

m		62.3 m														
		14 m			21 m			28 m			35 m			42 m		
		0°	20°	40°	0°	20°	40°	0°	20°	40°	0°	20°	40°	0°	20°	40°
14.0	t	11.6	-	-	8.6	-	-	-	-	-	-	-	-	-	-	-
16.0	t	11.5	-	-	8.6	-	-	6.9	-	-	-	-	-	-	-	-
18.0	t	11.4	-	-	8.6	-	-	6.9	-	-	5.3	-	-	-	-	-
20.0	t	11.1	10.6	-	8.5	-	-	6.8	-	-	5.1	-	-	-	-	-
22.0	t	10.7	10.2	-	8.5	-	-	6.6	-	-	4.9	-	-	-	-	-
24.0	t	10.3	9.9	9.7	8.3	7.8	-	6.4	-	-	4.8	-	-	-	-	-
26.0	t	9.9	9.5	9.4	8.0	7.6	-	6.3	-	-	4.6	-	-	-	-	-
28.0	t	9.4	9.1	9.0	7.8	7.4	-	6.1	5.1	-	4.5	-	-	-	-	-
30.0	t	8.9	8.7	8.6	7.5	7.2	6.6	6.0	5.0	-	4.3	-	-	-	-	-
32.0	t	8.4	8.3	8.2	7.1	6.9	6.5	5.8	4.8	-	4.2	3.3	-	-	-	-
34.0	t	7.9	7.9	7.8	6.8	6.7	6.4	5.6	4.7	4.0	4.1	3.2	-	-	-	-
36.0	t	7.4	7.5	7.5	6.5	6.4	6.3	5.5	4.6	3.9	3.9	3.1	-	-	-	-
38.0	t	7.0	7.2	7.2	6.2	6.1	6.1	5.3	4.5	3.9	3.8	3.1	-	-	-	-
40.0	t	6.6	6.9	6.9	5.9	5.9	5.9	5.1	4.4	3.8	3.7	3.0	2.4	-	-	-
44.0	t	5.7	6.1	6.3	5.3	5.4	5.4	4.6	4.3	3.7	3.5	2.8	2.3	-	-	-
48.0	t	5.0	5.3	5.5	4.6	4.9	5.0	4.2	4.1	3.6	3.3	2.7	2.2	-	-	-
52.0	t	4.3	4.5	4.7	4.0	4.4	4.5	3.7	3.9	3.6	3.1	2.6	2.2	-	-	-
56.0	t	3.8	3.9	-	3.4	3.7	4.0	3.2	3.5	3.5	2.8	2.4	2.1	-	-	-
60.0	t	3.4	3.4	-	2.9	3.2	3.4	2.8	3.1	3.3	2.4	2.4	2.1	-	-	-
64.0	t	3.0	3.0	-	2.6	2.8	-	2.3	2.6	2.9	2.0	2.3	2.1	-	-	-
68.0	t	2.5	-	-	2.3	2.4	-	2.1	2.3	2.5	1.7	2.1	2.1	-	-	-
72.0	t	2.1	-	-	2.0	2.1	-	1.8	1.9	-	1.3	1.7	2.0	-	-	-
76.0	t	-	-	-	1.7	-	-	1.6	1.7	-	1.2	1.4	-	-	-	-
80.0	t	-	-	-	-	-	-	1.2	1.4	-	1.0	1.1	-	-	-	-

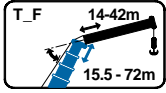


LIEBHERR LTM 1250/1

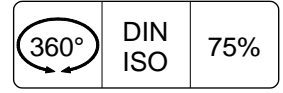
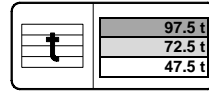
250 TON

Lifting capacities
Capacités

Tragfähigkeiten
Capacités



TF



m	67.5 m														
	14 m			21 m			28 m			35 m			42 m		
	0°	20°	40°	0°	20°	40°	0°	20°	40°	0°	20°	40°	0°	20°	40°
14.0	8.7	-	-	-	-	-	-	-	-	-	-	-	-	-	-
16.0	8.7	-	-	6.8	-	-	-	-	-	-	-	-	-	-	-
18.0	8.7	-	-	6.8	-	-	5.3	-	-	-	-	-	-	-	-
20.0	8.6	-	-	6.8	-	-	5.3	-	-	3.7	-	-	-	-	-
22.0	8.5	8.4	-	6.8	-	-	5.3	-	-	3.7	-	-	-	-	-
24.0	8.2	8.1	-	6.6	-	-	5.3	-	-	3.7	-	-	-	-	-
26.0	8.0	7.8	7.7	6.5	6.3	-	5.2	-	-	3.7	-	-	-	-	-
28.0	7.8	7.5	7.5	6.3	6.1	-	5.1	-	-	3.7	-	-	-	-	-
30.0	7.5	7.2	7.2	3.1	5.9	-	4.9	4.6	-	3.7	-	-	-	-	-
32.0	7.1	7.0	6.9	5.9	5.7	5.6	4.8	4.5	-	3.7	-	-	-	-	-
34.0	6.8	6.7	6.7	5.6	5.5	5.4	4.6	4.4	-	3.6	3.0	-	-	-	-
36.0	6.5	6.4	6.5	5.4	5.2	5.2	4.4	4.3	-	3.5	2.9	-	-	-	-
38.0	6.2	6.2	6.2	5.2	5.1	5.0	4.2	4.1	3.8	3.4	2.8	-	-	-	-
40.0	5.9	5.9	5.9	5.0	4.9	4.9	4.1	4.0	3.7	3.2	2.8	-	-	-	-
44.0	5.3	5.4	5.4	4.6	4.5	4.5	3.8	3.7	3.6	3.0	2.6	2.2	-	-	-
48.0	4.7	4.9	5.0	4.2	4.2	4.3	3.5	3.4	3.5	2.7	2.5	2.2	-	-	-
52.0	4.1	4.3	4.5	3.7	3.8	3.9	3.2	3.2	3.2	2.5	2.5	2.1	-	-	-
56.0	3.5	3.7	3.8	3.2	3.5	3.6	2.9	2.9	3.0	2.3	2.3	2.1	-	-	-
60.0	2.9	3.2	-	2.8	3.0	3.2	2.5	2.7	2.8	2.1	2.2	2.1	-	-	-
64.0	2.5	2.7	-	2.3	2.5	2.7	2.1	2.5	2.6	1.7	2.0	2.1	-	-	-
68.0	2.1	2.2	-	1.9	2.2	-	1.8	2.1	2.3	1.4	1.8	2.0	-	-	-
72.0	1.7	1.8	-	1.5	1.7	-	1.4	1.7	-	1.1	1.5	1.8	-	-	-
76.0	1.3	-	-	1.2	1.3	-	1.0	1.3	-	-	-	1.5	-	-	-
78.0	-	-	-	1.0	1.1	-	-	1.1	-	-	-	1.3	-	-	-

m	72.0 m														
	14 m			21 m			28 m			35 m			42 m		
	0°	20°	40°	0°	20°	40°	0°	20°	40°	0°	20°	40°	0°	20°	40°
28.0	-	-	-	-	-	-	-	-	-	2.7	-	-	-	-	-
30.0	-	-	-	-	-	-	-	-	-	2.7	-	-	-	-	-
32.0	-	-	-	-	-	-	-	-	-	2.7	-	-	-	-	-
34.0	-	-	-	-	-	-	-	-	-	2.7	-	-	-	-	-
36.0	-	-	-	-	-	-	-	-	-	2.7	2.7	-	-	-	-
38.0	-	-	-	-	-	-	-	-	-	2.7	2.6	-	-	-	-
40.0	-	-	-	-	-	-	-	-	-	2.7	2.6	-	-	-	-
44.0	-	-	-	-	-	-	-	-	-	2.6	2.5	-	-	-	-
48.0	-	-	-	-	-	-	-	-	-	2.3	2.4	-	-	-	-
52.0	-	-	-	-	-	-	-	-	-	2.1	2.2	-	-	-	-
56.0	-	-	-	-	-	-	-	-	-	1.8	2.0	-	-	-	-
60.0	-	-	-	-	-	-	-	-	-	1.5	1.9	-	-	-	-
64.0	-	-	-	-	-	-	-	-	-	-	1.7	-	-	-	-
68.0	-	-	-	-	-	-	-	-	-	-	1.4	-	-	-	-
72.0	-	-	-	-	-	-	-	-	-	-	1.1	-	-	-	-
74.0	-	-	-	-	-	-	-	-	-	-	-	-	-	-	-



LIEBHERR LTM 1250/1

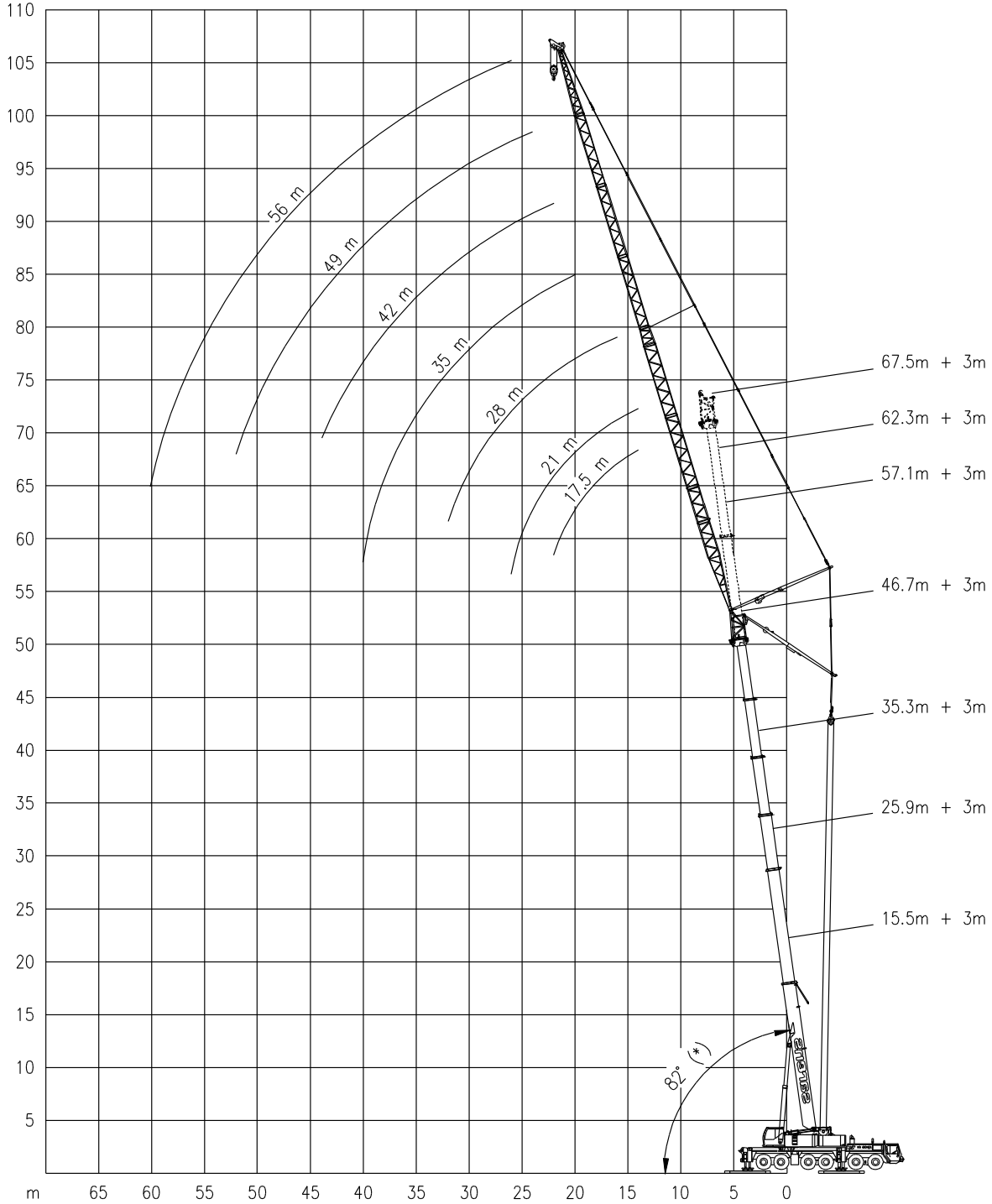
Working ranges
Portées

250 TON

Arbeitsbereiche
Werkbereich

TN 82°

1 / 600



(*) 75°: Available on request

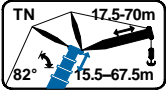


LIEBHERR LTM 1250/1

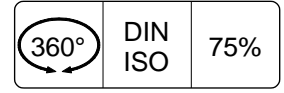
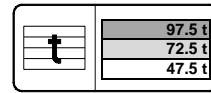
250 TON

Lifting capacities
Capacités

Tragfähigkeiten
Capaciteiten



TN 82°



m	15.5 m + 3 m										25.9 m + 3 m									
	17.5 m	21.0 m	28.0 m	35.0 m	42.0 m	49.0 m	56.0 m	63.0 m	70.0 m		17.5 m	21.0 m	28.0 m	35.0 m	42.0 m	49.0 m	56.0 m	63.0 m	70.0 m	
7.0	50.0	-	-	-	-	-	-	-	-	-	-	-	-	-	-	-	-	-	-	-
8.0	49.0	48.0	-	-	-	-	-	-	-	-	-	-	-	-	-	-	-	-	-	-
9.0	47.5	47.0	-	-	-	-	-	-	-	39.5	-	-	-	-	-	-	-	-	-	-
10.0	46.5	46.0	-	-	-	-	-	-	-	39.5	35.5	-	-	-	-	-	-	-	-	-
12.0	45.5	44.0	35.0	-	-	-	-	-	-	39.5	35.5	27.6	-	-	-	-	-	-	-	-
14.0	43.5	43.0	34.0	27.1	-	-	-	-	-	39.5	35.0	27.3	-	-	-	-	-	-	-	-
16.0	37.0	42.0	33.0	26.4	21.0	-	-	-	-	39.5	35.0	27.1	21.1	-	-	-	-	-	-	-
18.0	27.2	36.5	32.5	25.7	20.7	16.4	-	-	-	36.5	35.0	26.9	20.9	16.6	-	-	-	-	-	-
20.0	-	29.3	31.5	25.2	20.3	16.2	12.8	-	-	-	35.0	26.9	20.7	16.5	13.1	-	-	-	-	-
22.0	-	-	29.7	24.7	19.9	16.0	12.6	10.1	-	-	30.5	26.9	20.6	16.4	13.0	10.3	-	-	-	-
24.0	-	-	25.2	24.4	19.5	15.8	12.5	10.0	7.5	-	-	26.7	20.6	16.2	12.8	10.2	8.2	-	-	-
26.0	-	-	20.6	24.0	19.2	15.5	12.3	9.8	7.1	-	-	25.8	20.6	16.1	12.7	10.1	8.1	6.4	-	-
28.0	-	-	15.6	22.3	19.0	15.3	12.1	9.7	6.7	-	-	22.4	20.6	16.1	12.6	10.0	8.0	6.2	-	-
30.0	-	-	-	19.4	18.4	15.1	12.0	9.6	6.4	-	-	15.5	20.5	16.1	12.6	9.9	7.9	5.9	-	-
32.0	-	-	-	16.6	17.6	14.9	11.9	9.4	6.1	-	-	-	20.1	16.1	12.5	9.8	7.9	5.6	-	-
34.0	-	-	-	13.5	16.8	14.7	11.8	9.2	5.8	-	-	-	18.1	15.9	12.5	9.8	7.8	5.4	-	-
36.0	-	-	-	-	15.4	14.6	11.5	9.0	5.5	-	-	-	15.3	15.6	12.5	9.7	7.7	5.4	-	-
38.0	-	-	-	-	13.5	14.3	11.3	8.7	5.2	-	-	-	-	15.1	12.4	9.6	7.7	4.9	-	-
40.0	-	-	-	-	11.4	13.8	11.0	8.5	5.0	-	-	-	-	14.1	12.4	9.4	7.6	4.7	-	-
44.0	-	-	-	-	-	10.9	10.4	8.0	4.4	-	-	-	-	9.0	12.4	9.0	7.4	4.2	-	-
48.0	-	-	-	-	-	7.9	9.9	7.5	3.9	-	-	-	-	-	10.3	8.7	7.0	3.8	-	-
52.0	-	-	-	-	-	-	7.9	7.1	3.5	-	-	-	-	-	-	8.5	6.7	3.4	-	-
56.0	-	-	-	-	-	-	4.9	6.7	3.1	-	-	-	-	-	-	7.8	6.5	3.1	-	-
60.0	-	-	-	-	-	-	-	5.8	2.8	-	-	-	-	-	-	-	6.2	2.7	-	-
64.0	-	-	-	-	-	-	-	-	2.4	-	-	-	-	-	-	-	5.2	2.5	-	-
68.0	-	-	-	-	-	-	-	-	2.2	-	-	-	-	-	-	-	-	2.2	-	-
70.0	-	-	-	-	-	-	-	-	2.2	-	-	-	-	-	-	-	-	2.1	-	-
m	35.3 m + 3 m										46.7 m + 3 m									
	t	t	t	t	t	t	t	t	t	t	t	t	t	t	t	t	t	t	t	t
11.0	26.7	-	-	-	-	-	-	-	-	-	-	-	-	-	-	-	-	-	-	-
12.0	26.7	23.7	-	-	-	-	-	-	-	-	-	-	-	-	-	-	-	-	-	-
14.0	26.7	23.6	18.4	-	-	-	-	-	-	16.6	14.7	-	-	-	-	-	-	-	-	-
16.0	26.7	23.6	18.3	-	-	-	-	-	-	16.5	14.6	11.5	-	-	-	-	-	-	-	-
18.0	26.7	23.5	18.3	14.7	-	-	-	-	-	16.5	14.5	11.4	-	-	-	-	-	-	-	-
20.0	26.7	23.5	18.2	14.6	11.8	-	-	-	-	16.5	14.5	11.3	8.9	-	-	-	-	-	-	-
22.0	-	23.5	18.2	14.5	11.7	9.3	-	-	-	16.5	14.5	11.3	8.8	7.1	-	-	-	-	-	-
24.0	-	23.5	18.2	14.5	11.6	9.3	7.4	-	-	-	14.5	11.3	8.8	7.0	5.4	-	-	-	-	-
26.0	-	-	18.2	14.4	11.5	9.2	7.4	5.8	-	-	14.5	11.3	8.7	7.0	5.4	3.9	-	-	-	-
28.0	-	-	18.2	14.4	11.5	9.2	7.3	5.8	-	-	-	11.3	8.7	7.0	5.4	3.9	-	-	-	-
30.0	-	-	18.2	14.4	11.5	9.1	7.3	5.7	-	-	-	11.3	8.7	6.9	5.3	3.9	-	-	-	-
32.0	-	-	-	14.4	11.5	9.1	7.2	5.7	-	-	-	11.3	8.7	6.9	5.3	3.9	-	-	-	-
34.0	-	-	-	14.4	11.5	9.1	7.2	5.7	-	-	-	-	8.7	6.9	5.3	3.9	-	-	-	-
36.0	-	-	-	14.4	11.5	9.1	7.2	5.7	-	-	-	-	8.7	6.9	5.3	3.9	-	-	-	-
38.0	-	-	-	14.4	11.5	9.1	7.2	5.6	-	-	-	-	8.7	6.9	5.3	3.9	-	-	-	-
40.0	-	-	-	-	11.5	9.1	7.2	5.6	-	-	-	-	8.7	6.9	5.3	3.9	-	-	-	-
44.0	-	-	-	-	11.5	9.1	7.2	5.6	-	-	-	-	-	6.9	5.3	3.9	-	-	-	-
48.0	-	-	-	-	-	9.1	7.2	5.6	-	-	-	-	-	-	5.3	3.9	-	-	-	-
52.0	-	-	-	-	-	9.1	7.2	5.6	-	-	-	-	-	-	5.3	3.9	-	-	-	-
56.0	-	-	-	-	-	-	7.2	5.6	-	-	-	-	-	-	-	3.9	-	-	-	-
60.0	-	-	-	-	-	-	-	5.6	-	-	-	-	-	-	-	3.9	-	-	-	-
64.0	-	-	-	-	-	-	-	5.5	-	-	-	-	-	-	-	-	-	-	-	-
66.0	-	-	-	-	-	-	-	5.3	-	-	-	-	-	-	-	-	-	-	-	-
m	57.1 m + 3 m					62.3 m + 3 m				67.5 m + 3 m										
	17.5m	21.0m	28.0m	35.0m	42.0m	17.5m	21.0m	28.0m	35.0m	17.5m	21.0m	28.0m								
16.0	9.9	8.8	-	-	-	7.5	-	-	-	-	-	-								
18.0	9.9	8.7	-	-	-	7.4	6.4	-	-	5.4	-	-								
20.0	9.8	8.7	6.7	-	-	7.3	6.4	4.8	-	5.3	4.6	-								
22.0	9.8	8.6	6.6	5.1	-	7.3	6.4	4.7	3.1	5.3	4.5	2.8								
24.0	9.8	8.6	6.6	5.0	3.5	7.3	6.3	4.7	3.1	5.3	4.5	2.8								
26.0	-	8.6	6.6	5.0	3.5	-	6.3	4.7	3.1	-	4.5	2.8								
28.0	-	-	-	5.0	3.5	-	6.3	4.7	3.1	-	4.5	2.8								
30.0	-	-	-	4.9	3.5	-	-	4.6	3.1	-	-	2.8								
32.0	-	-	-	4.9	3.5	-	-	4.6	3.1	-	-	2.8								
34.0	-	-	-	4.9	3.5	-	-	4.6	3.1	-	-	2.8								
36.0	-	-	-	4.9	3.5	-	-	-	3.1	-	-	-								
38.0	-	-	-	4.9	3.5	-	-	-	3.1	-	-	-								
40.0	-	-	-	4.9	3.5	-	-	-	3.1	-	-	-								
44.0	-	-	-	-	3.5	-	-	-	3.1	-	-	-								
48.0	-	-	-	-	3.5	-	-	-	(42m)	-	-	-								



LIEBHERR LTM 1250/1

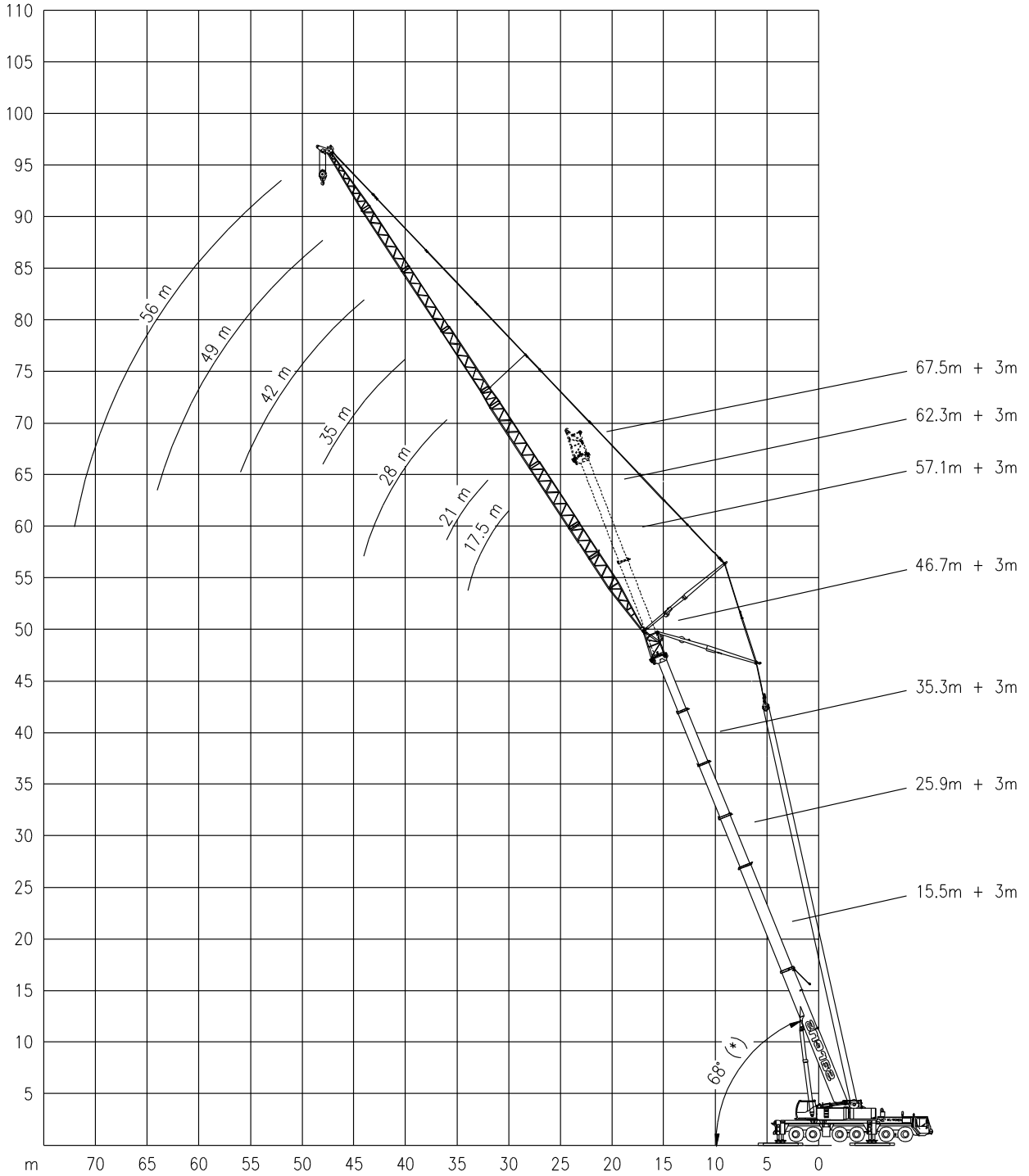
Working ranges
Portées

250 TON

Arbeitsbereiche
Werkbereich

TN 68°

1 / 600



(*) 75°: Available on request

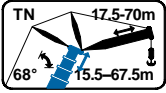


LIEBHERR LTM 1250/1

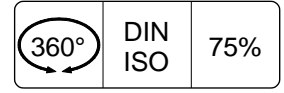
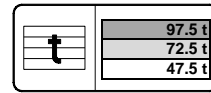
250 TON

Lifting capacities
Capacités

Tragfähigkeiten
Capacités



TN 68°



m	15.5 m + 3 m										25.9 m + 3 m									
	17.5 m	21.0 m	28.0 m	35.0 m	42.0 m	49.0 m	56.0 m	63.0 m	70.0 m	70.0 m	17.5 m	21.0 m	28.0 m	35.0 m	42.0 m	49.0 m	56.0 m	63.0 m	70.0 m	70.0 m
16.0	38.5	-	-	-	-	-	-	-	-	-	-	-	-	-	-	-	-	-	-	-
18.0	38.5	37.0	-	-	-	-	-	-	-	-	-	-	-	-	-	-	-	-	-	-
20.0	36.5	34.5	-	-	-	-	-	-	-	-	33.5	-	-	-	-	-	-	-	-	-
22.0	32.5	33.0	29.1	-	-	-	-	-	-	-	31.0	30.5	-	-	-	-	-	-	-	-
24.0	-	32.0	28.0	-	-	-	-	-	-	-	28.9	28.4	-	-	-	-	-	-	-	-
26.0	-	25.2	27.2	22.7	-	-	-	-	-	-	27.5	26.6	24.8	-	-	-	-	-	-	-
28.0	-	-	26.6	22.0	-	-	-	-	-	-	-	25.1	23.9	-	-	-	-	-	-	-
30.0	-	-	24.8	21.6	17.8	-	-	-	-	-	-	-	22.8	19.3	-	-	-	-	-	-
32.0	-	-	20.4	21.4	17.4	14.4	-	-	-	-	-	-	21.7	19.0	-	-	-	-	-	-
34.0	-	-	-	21.2	17.0	14.1	-	-	-	-	-	-	20.7	18.8	15.2	-	-	-	-	-
36.0	-	-	-	19.7	16.8	13.8	11.3	-	-	-	-	-	20.1	18.5	15.1	-	-	-	-	-
38.0	-	-	-	16.9	16.7	13.5	11.1	-	-	-	-	-	-	17.9	14.9	11.9	-	-	-	-
40.0	-	-	-	-	16.1	13.4	10.9	8.8	-	-	-	-	-	17.2	14.9	11.9	-	-	-	-
44.0	-	-	-	-	14.1	13.4	10.6	8.4	4.9	-	-	-	-	-	14.8	11.8	9.3	7.3	-	-
48.0	-	-	-	-	-	13.0	10.5	8.0	4.4	-	-	-	-	-	14.1	11.8	9.1	7.3	4.5	-
52.0	-	-	-	-	-	10.3	10.1	7.5	4.0	-	-	-	-	-	-	11.8	8.9	7.2	4.1	-
56.0	-	-	-	-	-	-	9.6	7.1	3.5	-	-	-	-	-	-	11.3	8.6	6.9	3.7	-
60.0	-	-	-	-	-	-	7.4	6.7	3.1	-	-	-	-	-	-	-	8.4	6.6	3.3	-
64.0	-	-	-	-	-	-	-	6.4	2.7	-	-	-	-	-	-	-	8.3	6.3	3.0	-
68.0	-	-	-	-	-	-	-	-	2.4	-	-	-	-	-	-	-	-	6.1	2.6	-
72.0	-	-	-	-	-	-	-	-	2.2	-	-	-	-	-	-	-	-	-	2.3	-
76.0	-	-	-	-	-	-	-	-	2.1	-	-	-	-	-	-	-	-	-	2.1	-
78.0	-	-	-	-	-	-	-	-	(74m)	-	-	-	-	-	-	-	-	-	2.1	-
m	35.3 m + 3 m										46.7 m + 3 m									
	t	t	t	t	t	t	t	t	t	t	t	t	t	t	t	t	t	t	t	t
26.0	19.9	-	-	-	-	-	-	-	-	-	-	-	-	-	-	-	-	-	-	-
28.0	18.7	18.4	-	-	-	-	-	-	-	-	-	-	-	-	-	-	-	-	-	-
30.0	17.7	17.3	-	-	-	-	-	-	-	-	13.1	-	-	-	-	-	-	-	-	-
32.0	-	16.4	15.6	-	-	-	-	-	-	-	12.4	12.0	-	-	-	-	-	-	-	-
34.0	-	-	14.8	-	-	-	-	-	-	-	11.8	11.4	-	-	-	-	-	-	-	-
36.0	-	-	14.1	13.2	-	-	-	-	-	-	-	10.8	9.8	-	-	-	-	-	-	-
38.0	-	-	13.5	12.6	11.0	-	-	-	-	-	-	-	9.4	-	-	-	-	-	-	-
40.0	-	-	12.9	12.1	10.9	-	-	-	-	-	-	-	9.1	7.9	-	-	-	-	-	-
44.0	-	-	-	11.1	10.3	8.7	-	-	-	-	-	-	8.3	7.4	6.3	-	-	-	-	-
48.0	-	-	-	-	9.6	8.7	6.9	-	-	-	-	-	-	7.0	6.1	4.5	-	-	-	-
52.0	-	-	-	-	8.9	8.3	6.9	5.2	-	-	-	-	-	5.9	4.5	3.1	-	-	-	-
56.0	-	-	-	-	-	7.8	6.9	5.2	-	-	-	-	-	5.5	4.5	3.1	-	-	-	-
60.0	-	-	-	-	-	7.3	6.6	5.2	-	-	-	-	-	-	4.5	3.1	-	-	-	-
64.0	-	-	-	-	-	-	6.2	5.2	-	-	-	-	-	-	4.2	3.1	-	-	-	-
68.0	-	-	-	-	-	-	6.0	5.2	-	-	-	-	-	-	-	3.1	-	-	-	-
72.0	-	-	-	-	-	-	-	4.9	-	-	-	-	-	-	-	3.1	-	-	-	-
74.0	-	-	-	-	-	-	-	4.8	-	-	-	-	-	-	-	-	-	-	-	-
m	57.1 m + 3 m					m	62.3 m + 3 m			67.5 m + 3 m										
	17.5m	21.0m	28.0m	35.0m	42.0m		21.0m	28.0m	35.0m	17.5m	21.0m	28.0m								
36.0	7.0	-	-	-	-	36.0	-	-	-	-	-	-								
38.0	6.7	6.2	-	-	-	38.0	-	-	-	-	-	-								
40.0	-	6.0	-	-	-	40.0	-	-	-	-	-	-								
44.0	-	-	4.7	-	-	46.0	-	3.1	-	-	-	-								
48.0	-	-	4.3	3.5	-	48.0	-	2.9	-	-	-	1.8								
52.0	-	-	-	3.3	2.5	50.0	-	2.8	2.1	-	-	1.8								
56.0	-	-	-	-	2.4	52.0	-	-	2.1	-	-	1.8								
60.0	-	-	-	-	2.3	54.0	-	-	2.0	-	-	-								
62.0	-	-	-	-	2.2	56.0	-	-	1.9	-	-	-								



LIEBHERR LTM 1250/1

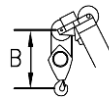
250 TON

Working speeds
Vitesses de travail

Arbeitsgeschwindigkeiten
Werksnelheden

Mechanisms Mécanismes Antriebe Aandrijvingen	Speeds Vitesses Geschwindigkeiten Snelheden	Rope diameter Diamètre du câble Seildurchmesser Kabeldiameter	Single line pull Effort sur brin simple Zulässiger Seilzug je strang Toeegelaten trekkracht / part	Length of ropes Longueur des cables Länge der Seile Kabellengte
Main hoist Levage sur flèche Hubwerk 1 Hijslier 1	0 – 135 m/min	23 mm	105 kN	360 m
Auxiliary hoist Levage sur fléchette Hubwerk 2 Hijslier 2	0 – 130 m/min	23 mm	105 kN	425 m
Slewing gear Orientation Drehwerk Zwenkwerk	0 – 1.6 RPM			
Travel speed Vitesse sur route Fahrgeschwindigkeit Rijsnelheid	0 – 40/70 km/h			
Booming up Relever la flèche Aufwippen Optoppen	82° 60 sec			
Telescope Téléscoper Teleskopieren Telescoperen	15.4 - 72 m 450 sec			

Hook Block / Crane hook Crochet mouflé / Crochet simple



Unterflasche / Hakengehänge Kraanblok / Kraanhaak

Capacity Capacité Tragfähigkeit Capaciteit	Number of sheaves Nombre de poulies Anzahl der Rollen Aantal schijven	Number of lines Nombre de brins Strangzahl Aantal parten	Weight Poids Gewicht Gewicht	"B"
SWL 108 t	5	10	1450 kg	3.0 m
SWL 32 t	1	3	870 kg	2.7 m